



# IMMIGRANT DEMOGRAPHICS MAPLE RIDGE, B.C.

- 2018 -

# MAPLE RIDGE

## IMMIGRANT DEMOGRAPHICS

Your quick and easy look at facts and figures around immigration. Newcomers are an important and growing part of your community. Here's what you need to know.

### GLOSSARY OF TERMS:

**CENSUS** refers to the population Census of Canada, which is taken at five-year intervals and counts persons and households and a wide variety of characteristics to provide a statistical portrait of the country.

**TOTAL POPULATION** refers to the total population counts in private households of a specific geographic area, regardless of immigration status.

**IMMIGRANTS** includes persons who are, or who have ever been, landed immigrants or permanent residents. In the 2016 Census of Population, 'Immigrants' includes immigrants who landed in Canada on or prior to May 10, 2016.

**RECENT IMMIGRANTS** are immigrants who arrived in Canada between January 1, 2011 and May 10, 2016.

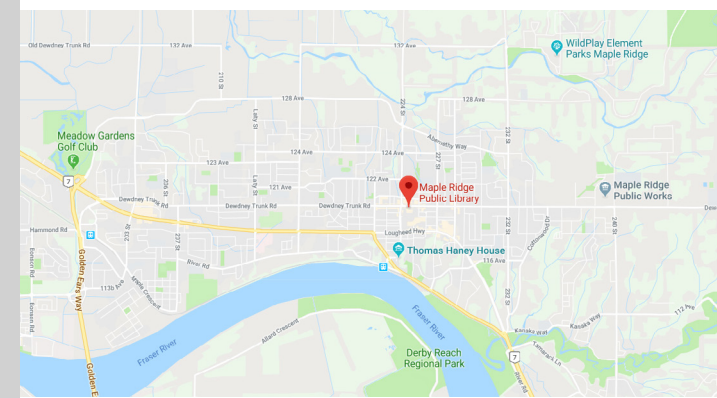
**METRO VANCOUVER** comprises 21 municipalities, one electoral district and one First Nation located in the southwest corner of British Columbia's mainland. It is bordered by the Strait of Georgia to the west, the U.S. border to the south, Abbotsford and Mission to the east, and unincorporated mountainous areas to the north.

### NOTES:

- Total population data in each chart or table may vary slightly due to different data sources, i.e. Census 2016 100% data and 25% sample data; Census 2011 and NHS 2011.
- Totals in each chart or table may vary slightly due to rounding.
- Data sources: the following profile has been developed with data and statistics from Stats Canada Census 2016, Census 2011 and National Household Survey (NHS) 2011, and Census 2006 Profiles.

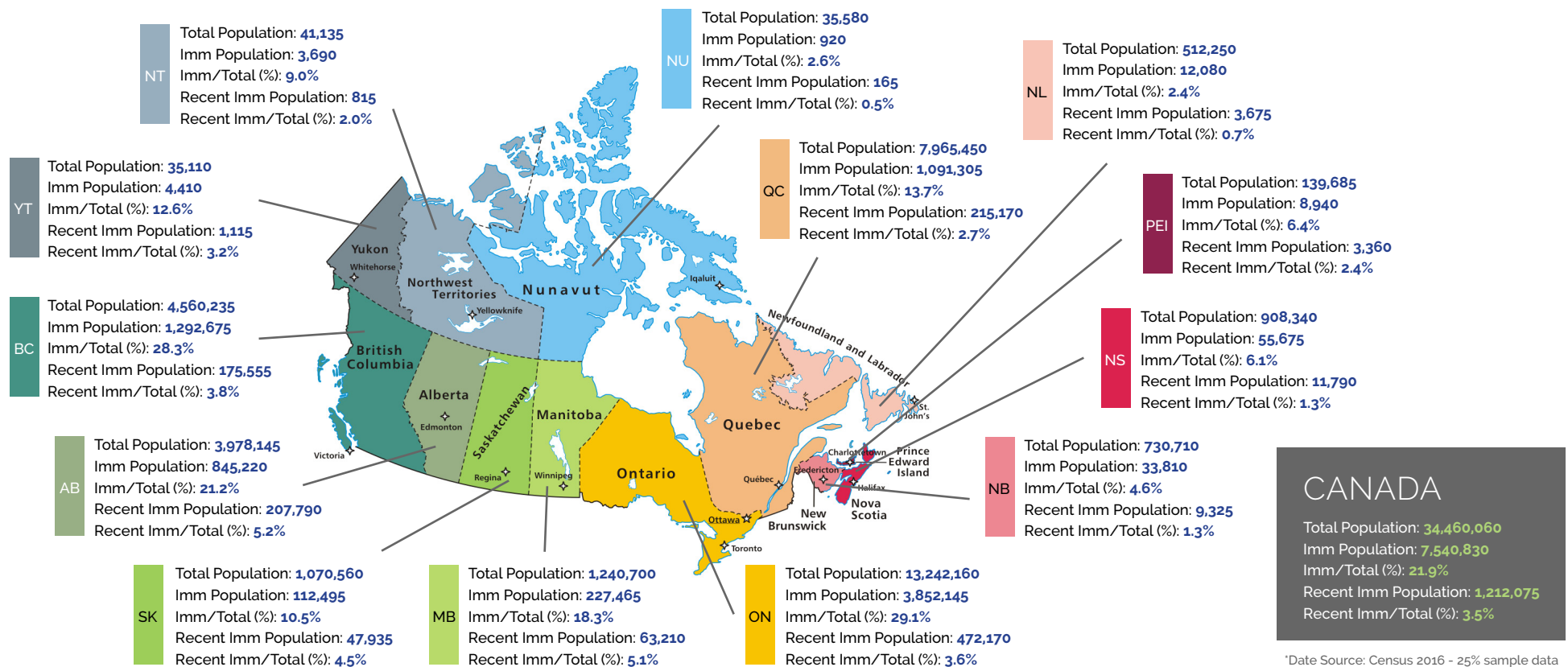
Maple Ridge is a district municipality in British Columbia, located approximately 45 kilometres east of Vancouver. It lays between the Fraser River to the south and the Golden Ears mountains to the north. The City of Mission is on its eastern border and the City of Pitt Meadows on its western border.

There is one Fraser Valley Regional Library branch in the City of Maple Ridge.



Map source: Google Maps

# NATIONAL/PROVINCIAL IMMIGRATION TOTALS (CENSUS 2016)



\*Date Source: Census 2016 - 25% sample data

- British Columbia has the second highest immigrant population compared to any other province or territory in Canada, only Ontario has a greater immigrant population. Census 2016 reported that a total of 1,292,675 immigrants made B.C. their home, representing 17.1% of Canada's total immigrant population. More than half (51.1%) of Canada's immigrants live in Ontario and 14.5% live in Quebec. The Prairie Provinces are home to 15.7% of Canada's immigrants.
- In the last census period, B.C. received fewer recent immigrants (175,555) than Ontario (472,170), Quebec (215,170) and Alberta (207,790).
- 28.3% of British Columbia's population was born outside Canada, second to Ontario (29.1%) and notably higher than the national level of 21.9%.

# POPULATION AND IMMIGRATION – MAINLAND / SOUTHWEST BC (CENSUS 2016 AND NHS 2011)

COMMUNITY	TOTAL POPULATION 2016	TOTAL POP. GROWTH (%) 2011-2016	IMM POPULATION 2016	IMM/TOTAL (%) 2016	RECENT IMM POPULATION 2016	RECENT IMM / TOTAL (%) 2016	IMM POP GROWTH (#) 2011 - 2016	IMM POP GROWTH (%) 2011 - 2016
British Columbia	4,560,235	5.6%	1,292,675	28.3%	175,555	3.8%	100,800	8.5%
Metro Vancouver	2,426,235	6.5%	989,540	40.8%	142,530	5.9%	76,230	8.3%
Vancouver	618,210	4.6%	262,770	42.5%	37,330	6.0%	4,020	1.6%
Surrey	511,545	10.6%	220,155	43.0%	36,335	7.1%	32,310	17.2%
Richmond	196,665	4.1%	118,305	60.2%	15,245	7.8%	5,430	4.8%
Burnaby	230,080	4.3%	115,145	50.0%	16,065	7.0%	3,970	3.6%
Coquitlam	138,090	9.8%	61,060	44.2%	9,530	6.9%	8,980	17.2%
Abbotsford	138,555	5.9%	38,225	27.6%	5,440	3.9%	4,290	12.6%
Delta	100,840	2.4%	31,240	31.0%	3,355	3.3%	2,720	9.5%
North Vancouver, District	84,875	1.8%	26,505	31.2%	3,240	3.8%	1,535	6.1%
New Westminster	69,905	7.6%	24,375	34.9%	3,500	5.0%	2,635	12.1%
Langley District	115,835	12.6%	22,495	19.4%	2,615	2.3%	3,980	21.5%
North Vancouver, City	52,185	9.8%	19,930	38.2%	3,740	7.2%	2,170	12.2%
West Vancouver, District	41,680	-0.5%	18,615	44.7%	2,940	7.1%	1,485	8.7%
Port Coquitlam	57,900	4.7%	18,430	31.8%	1,940	3.4%	2,050	12.5%
<b>Maple Ridge</b>	<b>80,975</b>	<b>8.2%</b>	<b>15,460</b>	<b>19.1%</b>	<b>1,520</b>	<b>1.9%</b>	<b>2,530</b>	<b>19.6%</b>
Chilliwack	82,210	7.5%	10,985	13.4%	1,070	1.3%	1,335	13.8%
Port Moody	33,450	1.6%	10,755	32.2%	1,220	3.6%	365	3.5%
Langley, City	25,315	3.2%	4,395	17.4%	525	2.0%	590	15.5%
White Rock	19,120	3.2%	4,895	25.6%	535	2.7%	360	7.9%
Pitt Meadows	18,425	4.7%	3,955	21.5%	385	2.1%	-35	-0.9%

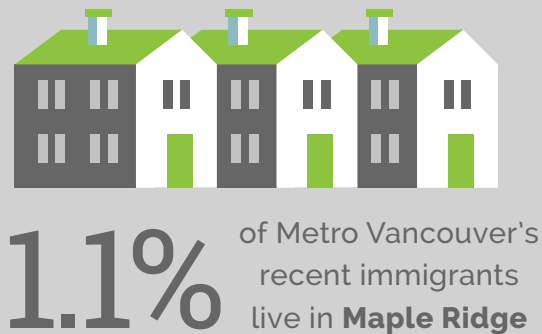
Note: Table ordered by number of total immigrants.

\* Data Source: Census 2016 - 25% sample data; NHS 2011



# POPULATION AND IMMIGRATION – MAINLAND / SOUTHWEST BC (CENSUS 2016 AND NHS 2011)

- Maple Ridge is the ninth largest city in the Metro Vancouver Region by total population. In 2016, Maple Ridge had 80,975 residents, representing 3.3% of Metro Vancouver's total population. Maple Ridge saw an increase of 8.2% in its population during the 2011-16 census period, slightly greater than the growth for Metro Vancouver (6.5%).
- During the recent census period Maple Ridge had a relatively small but fast-growing immigrant population. In 2016, Maple Ridge had 15,460 immigrant residents, representing 19.1% of its total population and 1.6% of Metro Vancouver's immigrant population. However, the City's immigrant population grew by 19.6% between 2011 and 2016, just second to the Township of Langley's increase (21.5%) and more than double the Metro Vancouver increase of 8.3%.
- In 2016, 81.2% of B.C.'s recent immigrants lived in the Metro Vancouver region. Of which 80% resided in the five most populous municipalities: Vancouver (26.2%), Surrey (25.5%), Burnaby (11.3%), Richmond (10.7%) and Coquitlam (6.7%). Maple Ridge received 1.1% (1,520) of Metro Vancouver's recent immigrants. Recent immigrants accounted for 60.1% of the City's net increase (2,530) in its total immigrant population between 2011 and 2016.



Between 2011 - 2016, Maple Ridge received

**1,520** RECENT IMMIGRANTS

# POPULATION AND IMMIGRATION TRENDS: MAPLE RIDGE

## IMMIGRATION TRENDS (2001 - 2016)

	Maple Ridge			Metro Vancouver		
	Total Population*	Immigrants**		Total Population*	Immigrants	
		Number	% of Total Population		Number	% of Total Population
<b>2016</b>	82,256	15,465	19.1%	2,463,431	989,540	40.8%
<b>2011</b>	76,052	12,935	17.2%	2,313,328	913,310	40.0%
<b>2006</b>	68,949	11,745	17.2%	2,116,581	831,265	39.6%
<b>2001</b>	63,169	10,335	16.6%	1,986,965	738,555	37.5%

\*Data source: Census data (100% data);

\*\*Data source: Census / NHS data (25% sample data).

- Maple Ridge experienced increases in both its total population (8.2%) and its immigrant population (19.6%) between 2011 and 2016, significantly faster than the growth of Metro Vancouver's total population (6.5%) and total immigrant population (8.3%). During the previous census period (2006-11), the City saw increases of 10.3% in its total population and 10.1% in its immigrant population.
- Over past census periods, immigration has been an important driver of population growth for Maple Ridge. Since 2001, the City has had an increase of 49.6% in its immigrant population, significantly faster than the 26.4% increase in the City's Canadian born population. Over the same period, Metro Vancouver had an increase of 34.0% in its immigrant population and 18.1% in its Canadian born population.
- In 2016, Maple Ridge's immigrant population as a portion of the total population was relatively small. In 2016, 19.1% (15,465) of the City's residents were born outside Canada, significantly smaller than the foreign-born population of the Metro Vancouver region at 40.8%. It made the City one of only four municipalities in Metro Vancouver and the Fraser Valley where less than 20% of the residents were born outside Canada. The other three were the Township of Langley (19.4%), the City of Langley (17.4%) and Chilliwack (13.4%).

## IMMIGRANT ARRIVALS BY PERIOD OF IMMIGRATION (CENSUS 2016)

- Census 2016 shows that Maple Ridge's recent immigrants made up 9.8% (1,515) of its immigrant population, notably lower than the Metro Vancouver's regional level of 14.4%.
- Maple Ridge received more recent immigrants in the census 2011-16 period than the 2006-11 period, while the Metro Vancouver Region received fewer in the last census period. NHS 2011 reported 1,355 and 155,125 recent immigrants coming to the City and the Region, respectively.
- Maple Ridge had a significantly larger proportion of immigrants who arrived in Canada before 1981 than Metro Vancouver: 34.6% for the City vs. 21.2% for the Region.

	Maple Ridge		Metro Vancouver	
	#	%	#	%
<b>Total Immigrants</b>	15,465	100%	989,540	100.0%
<b>2011 to 2016</b>	1,515	9.8%	142,535	14.4%
<b>2006 to 2010</b>	2,025	13.1%	143,580	14.5%
<b>2001 to 2005</b>	1,645	10.6%	124,890	12.6%
<b>1991 to 2000</b>	3,200	20.7%	247,835	25.0%
<b>1981 to 1990</b>	1,725	11.2%	120,730	12.2%
<b>Before 1981</b>	5,345	34.6%	209,975	21.2%

## POPULATION BY AGE AT IMMIGRATION (CENSUS 2016 AND NHS 2011)

- Canada's immigration policy generally results in the arrival of many "working age" immigrants. Between 2011 and 2016, about 60.8% of Maple Ridge's recent immigrants were between the ages of 15 and 44 upon arrival in Canada, slightly lower than the Metro Vancouver regional level of 62.7%, but noticeably more than the City's level for the 2006-11 census period (53.5%).
- Compared with the 2006-11 census period, Maple Ridge received a greater proportion of immigrants aged 45 and over, and a smaller proportion of immigrants aged 14 and younger: 20.4% (Census 2016) vs. 16.2% (NHS 2011) for the age group of 45 years and over, 21.7% (Census 2016) vs. 30.2% for the age group of 14 years and younger.

	Maple Ridge				Metro Van	
	Census 2016		NHS 2011		Census 2016	
	#	%	#	%	#	%
<b>Recent Immigrants</b>	1,520	100%	1,355	100%	142,530	100.0%
<b>Under 5 years</b>	70	4.6%	190	14.0%	8,370	5.9%
<b>5 to 14 years</b>	260	17.1%	220	16.2%	16,365	11.5%
<b>15 to 24 years</b>	195	12.8%	125	9.2%	19,855	13.9%
<b>25 to 44 years</b>	685	45.1%	600	44.3%	69,485	48.8%
<b>45 years and over</b>	310	20.4%	220	16.2%	28,450	20.0%

## TOP 10 PLACES OF BIRTH - BY TOTAL AND RECENT IMMIGRANT POPULATIONS (CENSUS 2016)

Canada			British Columbia			Metro Vancouver			Maple Ridge					
	#	%		#	%		#	%		#	%		#	%
<b>Recent Immigrants</b>	1,212,075	100%	<b>Recent Immigrants</b>	175,555	100%	<b>Recent Immigrants</b>	142,530	100%	<b>Total Immigrants</b>	15,460	100%	<b>Recent Immigrants</b>	1,520	100%
<b>Philippines</b>	188,805	15.6%	<b>China</b>	38,105	21.7%	<b>China</b>	35,890	25.2%	<b>United Kingdom</b>	3,115	20.1%	<b>Philippines</b>	335	22.0%
<b>India</b>	147,190	12.1%	<b>India</b>	27,455	15.6%	<b>India</b>	21,380	15.0%	<b>Philippines</b>	1,200	7.8%	<b>China</b>	165	10.9%
<b>China</b>	129,015	10.6%	<b>Philippines</b>	26,685	15.2%	<b>Philippines</b>	20,200	14.2%	<b>India</b>	845	5.5%	<b>United Kingdom</b>	160	10.5%
<b>Iran</b>	42,075	3.5%	<b>Iran</b>	8,645	4.9%	<b>Iran</b>	8,315	5.8%	<b>China</b>	660	4.3%	<b>India</b>	135	8.9%
<b>Pakistan</b>	41,480	3.4%	<b>Korea, South</b>	8,030	4.6%	<b>Korea, South</b>	6,635	4.7%	<b>Korea, South</b>	610	3.9%	<b>United States</b>	70	4.6%
<b>United States</b>	33,060	2.7%	<b>United Kingdom</b>	6,535	3.7%	<b>United States</b>	4,065	2.9%	<b>Germany</b>	600	3.9%	<b>Syria</b>	55	3.6%
<b>Syria</b>	29,950	2.5%	<b>United States</b>	6,490	3.7%	<b>United Kingdom</b>	3,850	2.7%	<b>United States</b>	580	3.8%	<b>Korea, South</b>	40	2.6%
<b>United Kingdom</b>	24,445	2.0%	<b>Mexico</b>	2,885	1.6%	<b>Taiwan</b>	2,325	1.6%	<b>Poland</b>	475	3.1%	<b>Romania</b>	40	2.6%
<b>France</b>	24,150	2.0%	<b>Taiwan</b>	2,500	1.4%	<b>Mexico</b>	2,295	1.6%	<b>South Africa, Republic of</b>	465	3.0%	<b>Ukraine</b>	40	2.6%
<b>Korea, South</b>	21,710	1.8%	<b>Japan</b>	2,290	1.3%	<b>Iraq</b>	1,850	1.3%	<b>Netherlands</b>	425	2.7%	<b>Germany</b>	35	2.3%
<b>Other places</b>	530,195	43.8%	<b>Other places</b>	45,935	26.3%	<b>Other places</b>	35,825	25.0%	<b>Other places</b>	6,485	41.9%	<b>Other places</b>	445	29.4%

- The Philippines was the largest source country for recent immigrants to Maple Ridge: Filipinos accounted for 22.0% of the City's recent immigrant population. In B.C. and Metro Vancouver, China was the single largest source country of recent immigrants. Nationally, the Philippines was also the largest source country for recent immigrants to Canada.
- Among the City's total immigrant population, the United Kingdom was the largest source country of immigrants (20.1%) and the Philippines at 7.8% was a distant second.
- Census 2016 shows a surge of recent immigrants from the Philippines and China between 2011 and 2016. Recent immigrants from China grew to 165 (10.9%) in 2016 from 60 (4.4%) in 2011; recent immigrants from the Philippines grew to 335 (22.0%) in 2016 from 160 (11.8%). In contrast, recent immigrants from the United Kingdom declined with 160 (10.5%) in 2016 from 255 (18.8%) in 2011.
- In 2016, Maple Ridge had a significantly smaller proportion of visible minorities (15.0%) compared to Metro Vancouver (48.9%). There was no single largest visible minority group within the City's total population. Among recent immigrants to the City, 70.3% reported as a visible minority; led by people of Filipino (22.4%), Chinese (12.2%) and South Asian (11.9%) descent.



## NUMBER OF IMMIGRANTS BY IMMIGRATION CATEGORY (2016)

Admission category and applicant type for the immigrant population in private households who landed between 1980 and 2016 - 25% sample data.

	Maple Ridge				Metro Vancouver			
	Total Immigrants		Recent Immigrants		Total Immigrants		Recent Immigrants	
	#	%	#	%	#	%	#	%
<b>Total Immigrants</b>	10,380	100%	1,520	100%	794,150	100.0%	142,530	100.0%
<b>Economic Immigrants</b>	6,045	58.2%	950	62.5%	461,955	58.2%	89,850	63.0%
<b>Principal Applicants</b>	2,290	22.1%	350	23.0%	176,955	22.3%	38,630	27.1%
<b>Secondary Applicants</b>	3,760	36.2%	590	38.8%	285,000	35.9%	51,215	35.9%
<b>Immigrants Sponsored by Family</b>	2,885	27.8%	470	30.9%	249,920	31.5%	42,665	29.9%
<b>Refugees</b>	1,405	13.5%	105	6.9%	71,115	9.0%	9,260	6.5%
<b>Other Immigrants</b>	40	0.4%	0	0.0%	11,160	1.4%	760	0.5%

\*Note: 'Other immigrants' includes immigrants who were granted permanent resident status under a program that does not fall within the Economic Immigration Program, Family Class or the Refugee and Protected Persons categories. Other Immigrants category includes those who were granted permanent resident status under public policy or humanitarian and compassionate cases.

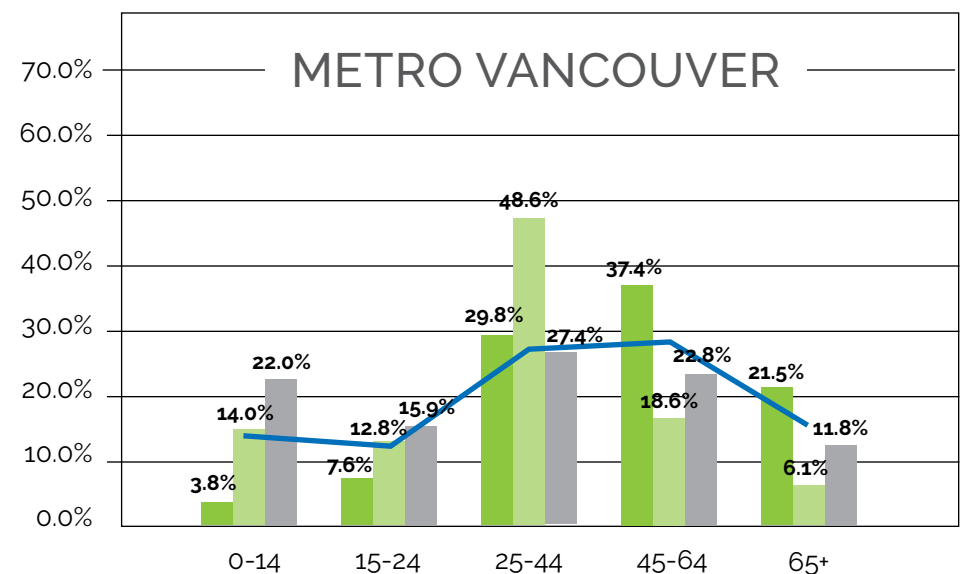
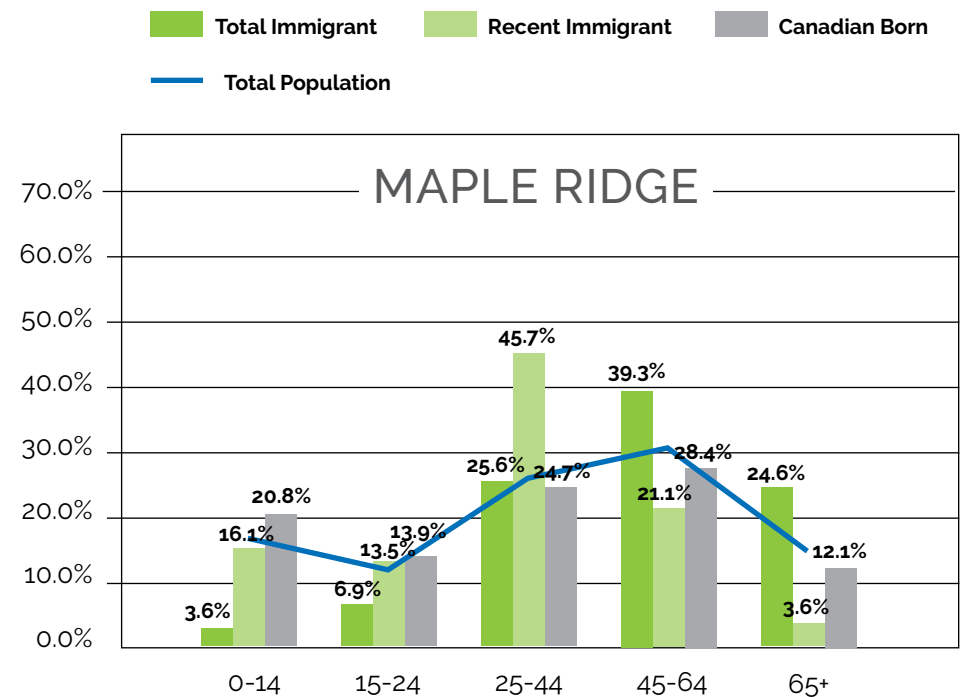
- Economic immigrants make up the largest proportion of the immigrant population in Maple Ridge. Census 2016 shows that 58.2% of its total immigrant population and 62.5% of its recent immigrant population arrived under the economic class, similar to Metro Vancouver's regional levels – 58.2% of total immigrants and 63.0% of recent immigrants.
- Maple Ridge also shows very similar proportions to Metro Vancouver in the other two categories: refugees and immigrants sponsored by family.

## AGE DISTRIBUTION – MAPLE RIDGE (CENSUS 2016)

- Immigration is commonly viewed as a key economic solution to Canada's aging population. In 2016, the average age of Maple Ridge's recent immigrants was 33.9, compared to 51.1 for its total immigrants and 40.1 for the total population.
- In 2016, working age immigrants (25-64 years) made up 64.8% and 66.8% of Maple Ridge's total immigrant and recent immigrant population respectively, significantly higher than its Canadian born population at 53.2%.
- Maple Ridge's Canadian born population had a much larger proportion (20.8%) of young people between the ages of 0-14 than their immigrant (3.6%) and recent immigrant peers (16.1%).
- In contrast, 24.6% of the City's immigrants were seniors (65 years or above), significantly larger than the proportions of its recent immigrant population (3.6%) and Canadian born population (12.1%).

## AGE DISTRIBUTION - METRO VANCOUVER (CENSUS 2016)

- In general, Maple Ridge had a marginally younger population than Metro Vancouver: the average age for the City was 40.1 vs. 41.0 for the Region.
- When compared by the average age of immigrants, the City had a younger recent immigrant population (average of 33.9 years) but an older total immigrant population (average of 51.1 years) than Metro Vancouver where the average age of recent immigrants was 34.7 years and the average age for the total immigrant population was 49 years.

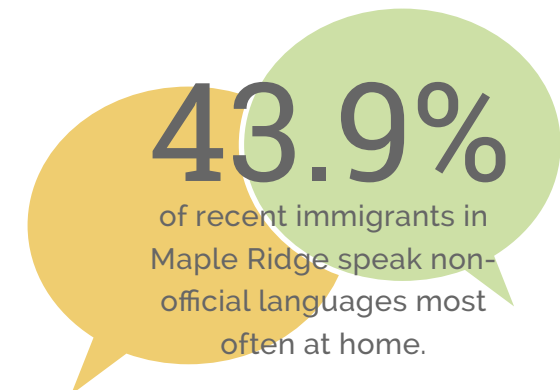


# LANGUAGE

## TOP 5 NON-OFFICIAL HOME LANGUAGES (CENSUS 2016)

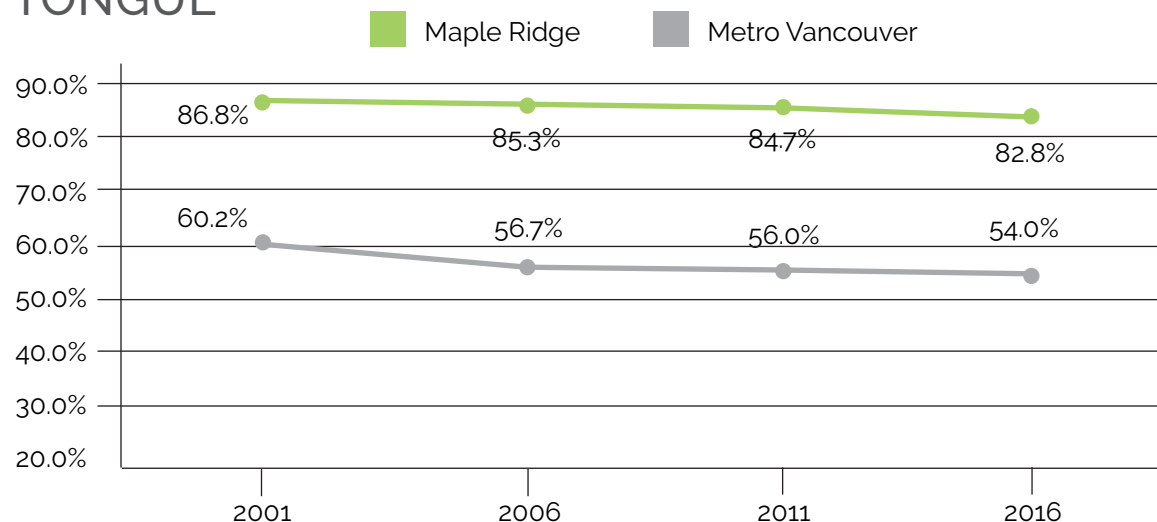
Maple Ridge						Metro Vancouver		
	#	%		#	%		#	%
Total Immigrants	15,465	100%	Recent Immigrants	1,515	100%	Recent Immigrants	142,535	100.0%
Non-Official Languages	4,280	27.7%	Non-Official Languages	665	43.9%	Non-Official Languages	88,570	62.1%
Korean	460	3.0%	Tagalog (Pilipino, Filipino)	115	7.6%	Mandarin	26,905	18.9%
Mandarin	455	2.9%	Mandarin	110	7.3%	Punjabi (Panjabi)	12,940	9.1%
Spanish	395	2.6%	Arabic	75	5.0%	Tagalog (Pilipino, Filipino)	7,790	5.5%
Punjabi (Panjabi)	355	2.3%	Spanish	70	4.6%	Persian (Farsi)	7,055	4.9%
Tagalog (Pilipino, Filipino)	335	2.2%	Punjabi (Panjabi)	40	2.6%	Cantonese	6,095	4.3%
Other Non-Official Languages	2,280	14.7%	Other Non-Official Languages	255	16.8%	Other Non-Official Languages	27,785	19.4%

- In 2016, close to half (43.9%) of Maple Ridge's recent immigrants spoke non-official languages most often at home, significantly lower than Metro Vancouver's regional level of 62.1%, but higher than the 27.7% of the City's total immigrant population.
- In 2016, Tagalog (7.6%) was the most often spoken home language for recent immigrants, followed by Mandarin (7.3%) and Arabic (5.0%).
- Census 2016 shows that Maple Ridge had noticeably larger proportions of immigrants speaking non-official languages at home than the 2006-11 census period when 24.7% of total immigrants and 33.6% of recent immigrants spoke non-official languages at home.



## LANGUAGE TRENDS (2001 - 2016) - BY % OF POPULATION WITH ENGLISH ONLY AS A MOTHER TONGUE

- Maple Ridge's residents who spoke English only as their mother tongue remained at more than 25% higher than the Metro Vancouver level. However, the City continued its proportional decline from 86.8% in 2001 to 82.8% in 2016, marginally slower than the decline for Metro Vancouver which went from 60.2% to 54.0%.



## LANGUAGES SPOKEN MOST OFTEN AT WORK (CENSUS 2016) BY % OF IMMIGRANT POPULATION AGED 15 YEARS AND OVER

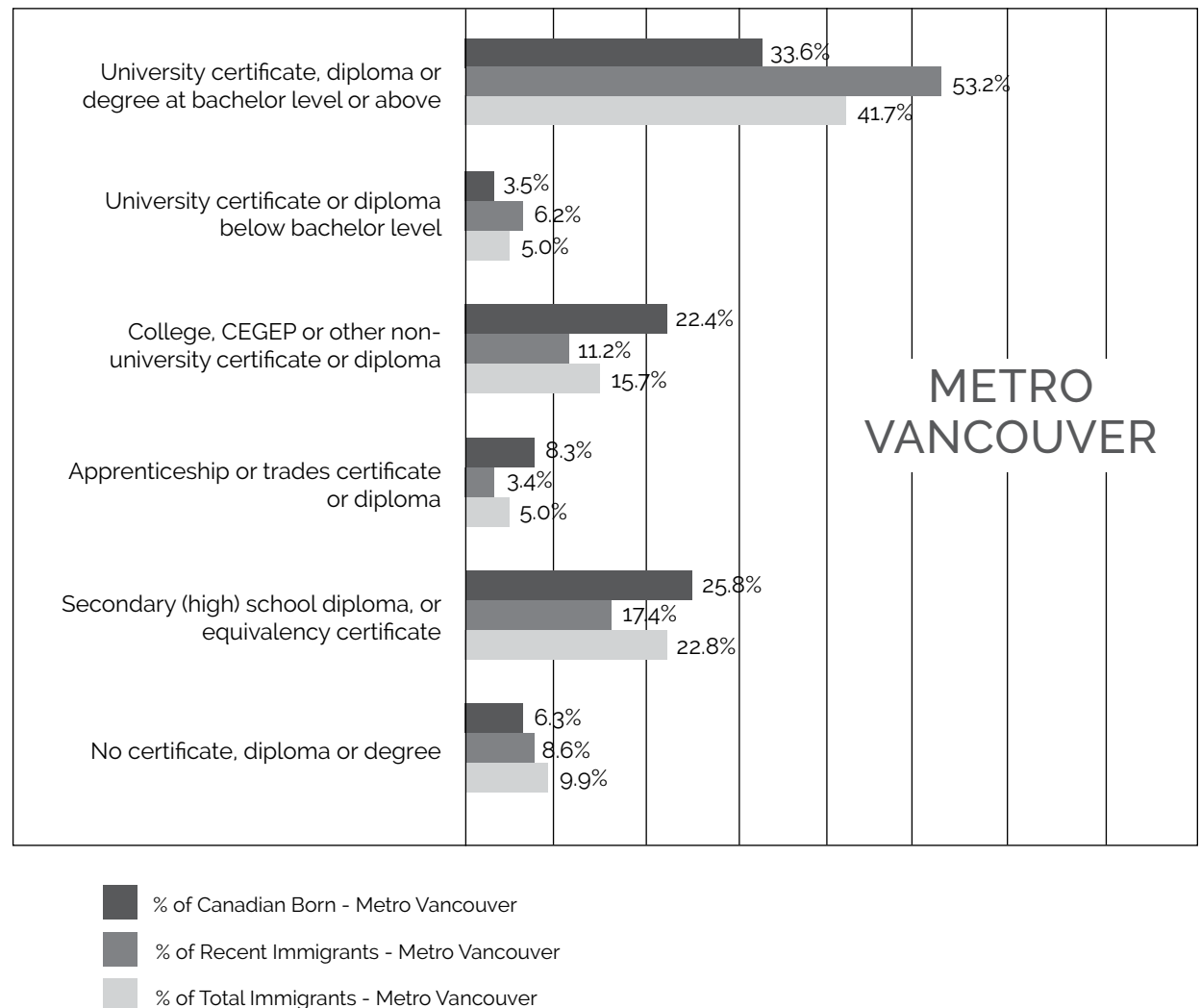
- In 2016, 7.3% of Maple Ridge's recent immigrants spoke non-official languages often at work, significantly less than the Metro Vancouver regional level of 17.8%, also slightly less than the City's 2011 rate of 9.3%.
- In 2016, Mandarin was the most often spoken non-official language at work by the City's immigrant population (0.9%), recent immigrant population (3.1%), and Metro Vancouver's recent immigrant population (6.9%).

Maple Ridge				Metro Vancouver	
Total Immigrants		Recent Immigrants		Recent Immigrants	
Non-Official Languages	2.8%	Non-Official Languages	7.3%	Non-Official Languages	17.8%
Mandarin	0.9%	Mandarin	3.1%	Mandarin	6.9%
Korean	0.5%	Punjabi (Panjabi)	1.6%	Punjabi (Panjabi)	4.5%
Cantonese	0.4%	Arabic	1.0%	Cantonese	2.4%

# EDUCATION LEVEL (CENSUS 2016)

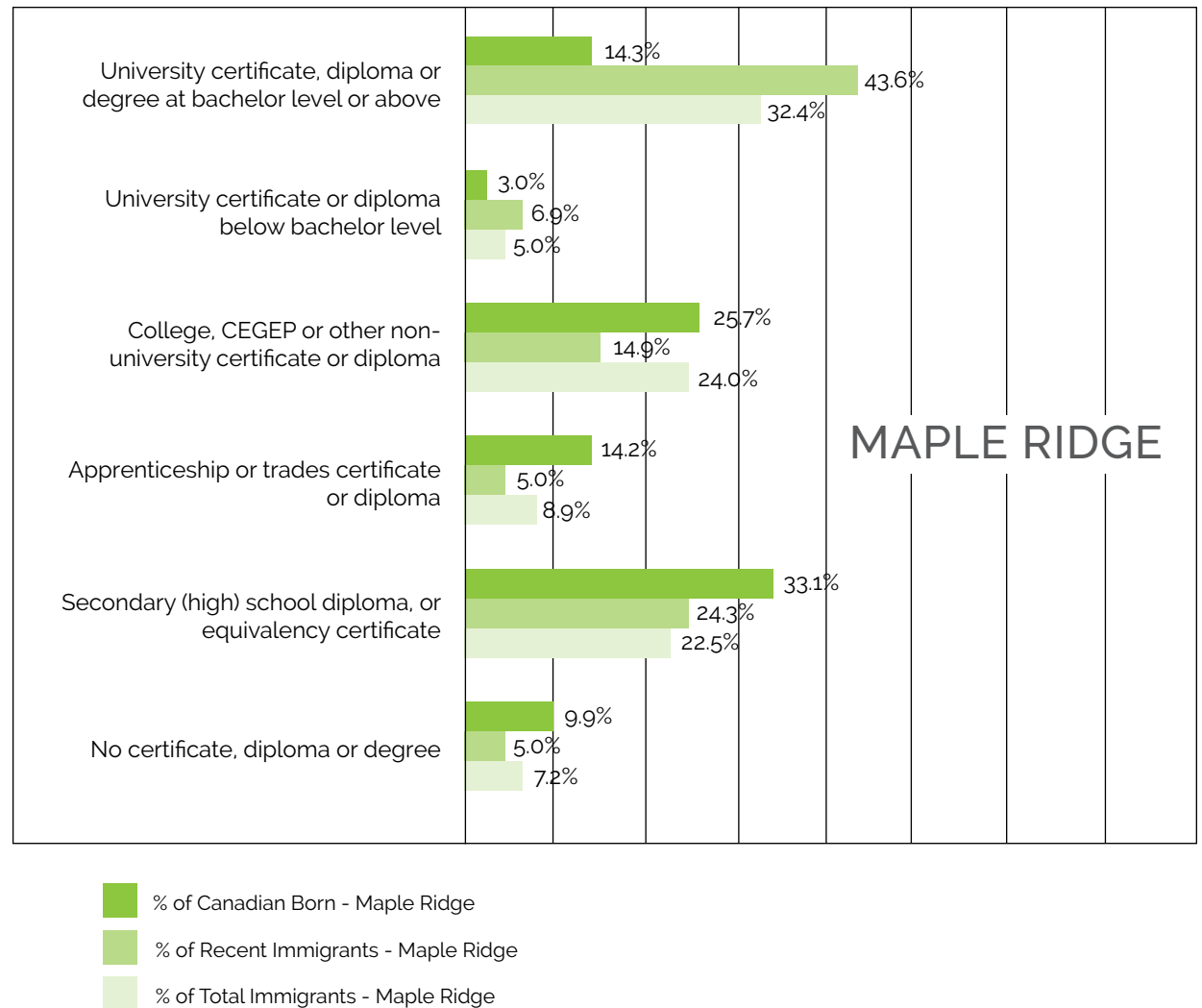
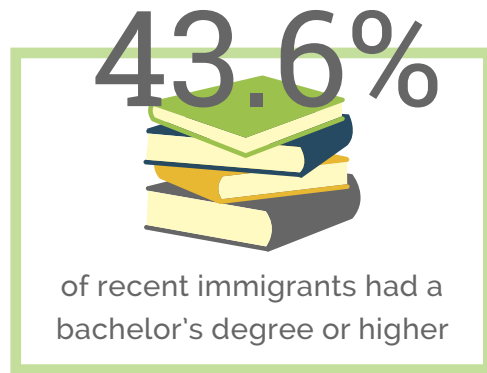
## HIGHEST LEVEL OF EDUCATION - BY % OF POPULATION AGED 25 TO 64 YEARS

- Maple Ridge's Canadian born population reported higher levels of educational attainment in apprenticeship and trades as well as in the high school or equivalency categories. While immigrants and recent immigrants reported higher levels of educational attainment in college and university certificates, diplomas or degrees.
- In 2016, 43.6% of Maple Ridge's recent immigrants between the ages of 25 and 64 had a bachelor's degree or higher, significantly higher than the proportion of their Canadian born counterparts (14.3%) and total immigrants (32.4%), but 10% lower than Metro Vancouver's recent immigrants (53.2%).
- Compared to the previous census period (2006-11), Maple Ridge saw growth in its college and university educated population. In 2011, the corresponding percentages of those with a bachelor's degree or higher were: 39.9% of the City's recent immigrants, 25.9% of its total immigrants and 12.7% of the Canadian born population.





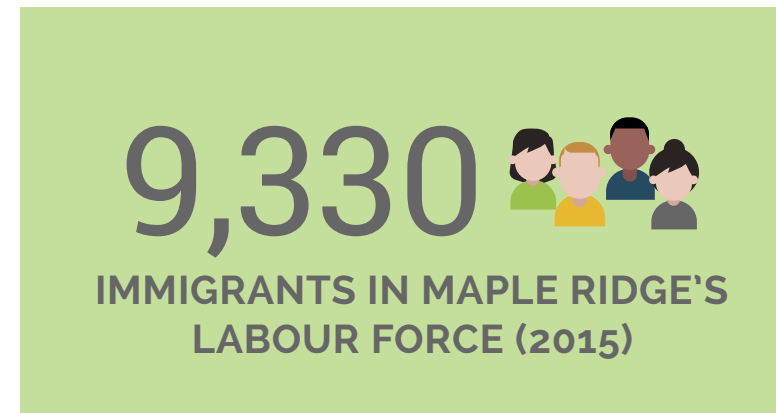
- Metro Vancouver was also home to a larger proportion of college and university educated immigrants compared to its Canadian born counterparts. 53.2% of recent immigrants and 41.7% of total immigrants had a bachelor's degree or higher, compared to 33.6% of the Canadian born population.



# LABOUR FORCE ACTIVITY (CENSUS 2016)

## EMPLOYMENT / UNEMPLOYMENT RATES IN 2015 FOR POPULATION AGED 15 YEARS AND OVER

	Maple Ridge			Metro Vancouver		
	Canadian Born	Total Immigrants	Recent Immigrants	Canadian Born	Total Immigrants	Recent Immigrants
<b>Total population aged 15 years and over</b>	51,655	14,900	1,270	1,112,275	952,340	122,615
<b>In the labour force</b>	36,520	9,330	930	769,910	585,610	80,025
<b>Participation rate (%)</b>	70.7%	62.6%	73.2%	69.2%	61.5%	65.3%
<b>Employment rate (%)</b>	67.0%	59.7%	69.7%	65.3%	57.8%	59.2%
<b>Unemployment rate (%)</b>	5.3%	4.6%	4.8%	5.7%	5.9%	9.3%



- In 2015 there were 9,330 immigrants and 930 recent immigrants in Maple Ridge's labour force. Immigrants and recent immigrants represented 20.3% and 2.0% of the City's labour force respectively, compared to the corresponding rates of 18.0% and 2.0% in 2010 (NHS 2011).
- 4.8% of Maple Ridge's recent immigrants were unemployed in 2015, slightly higher than 4.6% for its total immigrant labour force but lower than the 5.3% for its Canadian born labour force. This represented a significant decrease in unemployment from the 2006-11 census period when 7.0% of recent immigrants, 5.7% of total immigrants and 7.0% of Canadian born workers reported as unemployed in 2010 (NHS 2011).
- Compared to the Metro Vancouver region, Maple Ridge had significantly lower unemployment rates in 2015: 4.8% vs. 9.3% for recent immigrants, 4.6% vs. 5.9% for total immigrants, and 5.3% vs. 5.7% for the Canadian born population.

# OCCUPATION DISTRIBUTION (CENSUS 2016)

## DISTRIBUTION OF TOP TEN OCCUPATIONS - BY % LABOUR FORCE POPULATION AGED 15 YEARS AND OVER

	Maple Ridge				Metro Vancouver		
	Canadian Born	Total Immigrants	Recent Immigrants		Canadian Born	Total Immigrants	Recent Immigrants
<b>62 Health care and social assistance</b>	10.2%	14.9%	14.5%	<b>44-45 Retail trade</b>	11.1%	11.0%	12.2%
<b>44-45 Retail trade</b>	12.3%	10.9%	15.6%	<b>62 Health care and social assistance</b>	9.6%	10.9%	7.7%
<b>23 Construction</b>	12.8%	9.1%	12.4%	<b>54 Professional; scientific and technical services</b>	9.8%	9.9%	10.8%
<b>31-33 Manufacturing</b>	7.0%	8.7%	5.9%	<b>72 Accommodation and food services</b>	7.6%	9.0%	13.0%
<b>54 Professional, scientific and technical services</b>	5.2%	7.3%	4.3%	<b>31-33 Manufacturing</b>	5.1%	7.7%	7.2%
<b>61 Educational services</b>	6.6%	6.1%	3.2%	<b>23 Construction</b>	7.8%	6.5%	7.7%
<b>72 Accommodation and food services</b>	6.0%	5.8%	11.8%	<b>48-49 Transportation and warehousing</b>	5.2%	6.0%	3.9%
<b>48-49 Transportation and warehousing</b>	6.0%	4.8%	3.2%	<b>61 Educational services</b>	8.5%	5.8%	4.7%
<b>81 Other services (except public administration)</b>	4.8%	4.8%	5.9%	<b>52 Finance and insurance</b>	4.6%	5.1%	3.7%
<b>56 Administrative and support, waste management and remediation services</b>	4.2%	4.6%	3.2%	<b>56 Administrative and support; waste management and remediation services</b>	4.1%	5.0%	5.8%

- Just as in the previous census period (2006-11), Census 2016 shows that Health care and social assistance, Retail trades, and Construction remained the three largest sectors for Maple Ridge's residents. In 2016, the three industries combined hired 35.4% of the City's Canadian born labour force, 34.9% of its total immigrant labour force and 42.5% of its recent immigrant labour force.
- The Accommodation and food services sector was also important for recent immigrants, hiring 11.8% of the City's recent immigrants.
- Compared with the Metro Vancouver regional level, Maple Ridge had a noticeably larger proportion of its labour force working in the Construction sector, but a smaller proportion of its labour force working in the Professional, scientific and technical services sector.

# INCOME (CENSUS 2016)

## TOTAL INCOME IN 2015 FOR INDIVIDUALS AGED 15 YEARS AND OVER

	Maple Ridge			Metro Vancouver		
	Total Population	Total Immigrants	Recent Immigrants	Total Population	Total Immigrants	Recent Immigrants
<b>Population aged 15 years and over</b>	66,575	14,900	1,270	2,064,585	952,340	122,620
<b>Average income \$</b>	\$46,950	\$44,183	\$40,936	\$46,821	\$40,437	\$28,845
<b>Median income \$</b>	\$37,508	\$33,781	\$25,951	\$32,612	\$27,642	\$19,625
<b>Prevalence of low income in 2015, based on after-tax low-income measure (%)</b>	10.7%	13.1%	18.5%	16.5%	20.5%	33.5%

- In 2015, the median income of Maple Ridge's recent immigrant population was \$25,951, approximately 69.2% of the median income for its total population. Immigrants earned \$33,781 in median income, about 90.1% of its total population's median income.
- Generally, Maple Ridge's labour force earned slightly more than their counterparts in Metro Vancouver: \$37,508 for the City's total population vs. \$32,612 for the Region's, \$33,781 vs. \$27,642 for the total immigrant population, and \$25,951 vs. \$19,625 for the recent immigrant labour force.
- Maple Ridge's residents earned more in 2015 than in 2010, with its Canadian born population having the highest gain. Census 2016 shows that the City's recent immigrants earned 12.5% more in median income in 2015 than the \$23,077 they earned in 2010, the total immigrant population earned 10.5% more than the \$30,578 earned in 2010, and the total population showed a 15.7% increase from the \$32,412 earned in 2010.
- Census 2016 shows that recent immigrants were still more likely to live on a low income. In 2015, 18.5% of Maple Ridge's recent immigrant population aged 15 years and over were in the low-income bracket, compared with 13.1% of the City's total immigrant population and 10.7% of the its total population. Overall, the City had a noticeably smaller proportion of low-income residents than Metro Vancouver.
- Maple Ridge has seen a small reduction in the percentages of low-income residents since 2010 when 21.7% of recent immigrants, 14.5% of immigrants and 11.5% of its total population lived on a low income.

## EMPLOYMENT INCOME IN 2015 OF INDIVIDUALS AGED 15 YEARS AND OVER WHO WORKED FULL YEAR, FULL TIME

	Maple Ridge			Metro Vancouver		
	Total Population	Total Immigrants	Recent Immigrants	Total Population	Total Immigrants	Recent Immigrants
<b>Population aged 15 years and over</b>	66,555	14,900	1,275	2,064,615	952,340	122,620
<b>Population who worked full year, full time and with employment income in 2010</b>	23,785	4,475	355	637,390	258,940	25,630
<b>Average income \$</b>	\$65,391	\$64,013	\$60,555	\$67,916	\$61,567	\$53,737
<b>Median income \$</b>	\$58,033	\$55,250	\$47,674	\$54,955	\$49,407	\$41,559

- About 27.8% of Maple Ridge's recent immigrants worked full-time for a full year with an employment income in 2015, significantly less than 30.0% of the City's total immigrants and 35.7% of its total labour force.
- In 2015, Maple Ridge had a slightly larger proportion of full year and full-time labour force participants than Metro Vancouver where 20.9% of the Region's recent immigrants, 27.2% of its total immigrants and 30.9% of its total population worked full time and for a full year in 2015.
- Compared with the previous census period (2006-11), there were noticeably fewer full-time job opportunities for Maple Ridge's labour force. NHS 2011 reported that 32.3% of Maple Ridge's recent immigrants, 32.9% of its immigrant workers and 36.0% of its total labour force worked full-time and for a full year in 2010.
- In 2015, Maple Ridge's recent immigrants who worked full-time and for a full year earned \$47,674 in median income, equivalent to 82.1% of the median income for the City's total population (\$58,033). The median income for its total immigrants (\$55,250), however, was much closer (95.2%) to the level for the City's total population
- Maple Ridge's labour force earned more in 2015 than 2010, except for its recent immigrant labour force. Census 2016 shows a growth of 11.0% from \$52,269 in 2010 for its total labour force, a growth of 5.3% from \$52,468 for its total immigrant labour force, but a decline of 2.0% from \$48,638 in 2010 for its recent immigrant labour force.



# ABOUT NEWTOBC

## NewToBC

NewToBC partners with libraries and community service providers to develop, deliver, and promote services and resources that support immigrant settlement and integration in communities across the province. NewToBC uses innovative approaches and emerging technologies to deliver three key activities.

1. NewToBC operates the **Library Champions Project** in communities across Metro Vancouver and the Fraser Valley.
2. NewToBC develops, updates and disseminates a variety of library and settlement information resources for new immigrants.
3. NewToBC uses social media platforms to share information about settlement resources, volunteer opportunities, and no cost workshops, training and community events of interest to new immigrants in Southwest B.C. Go to our **Facebook**, **Twitter** and **LinkedIn** feeds to find out more.

NewToBC is managed by **Public Library InterLINK**. The project represents the eighteen public library systems in the Public Library InterLINK federation. The project was established by the Government of British Columbia in 2012. NewToBC is currently funded through a Contribution Agreement with **Immigration, Refugees and Citizenship Canada** (IRCC).

Copyright © 2018: NewToBC: The Library Link For Newcomers and Public Library InterLINK



Funded by:

Financé par :



Immigration, Refugees  
and Citizenship Canada

Immigration, Réfugiés  
et Citoyenneté Canada